



PARTS CATALOG

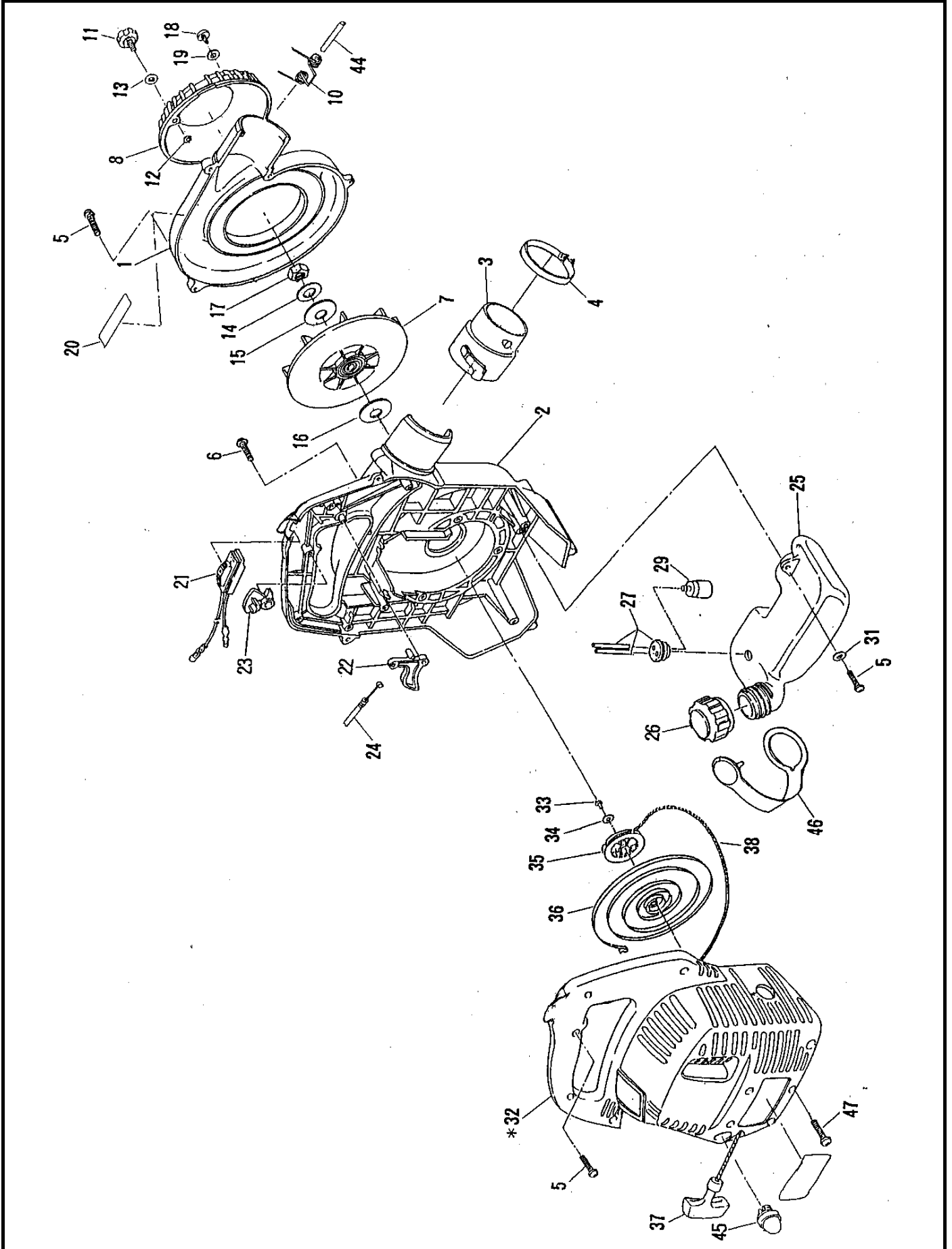
M o d e l FL251(CE,U.S. SPEC.)
 FL251V(CE SPEC.)

MACHINE BODY,
ENGINE BODY,
CARBURETOR,
ACCESSORIES,

FL251 FL251V PARTS LIST

MACHINE BODY

(CE SPEC.)



FL251 FL251V PARTS LIST

MACHINE BODY

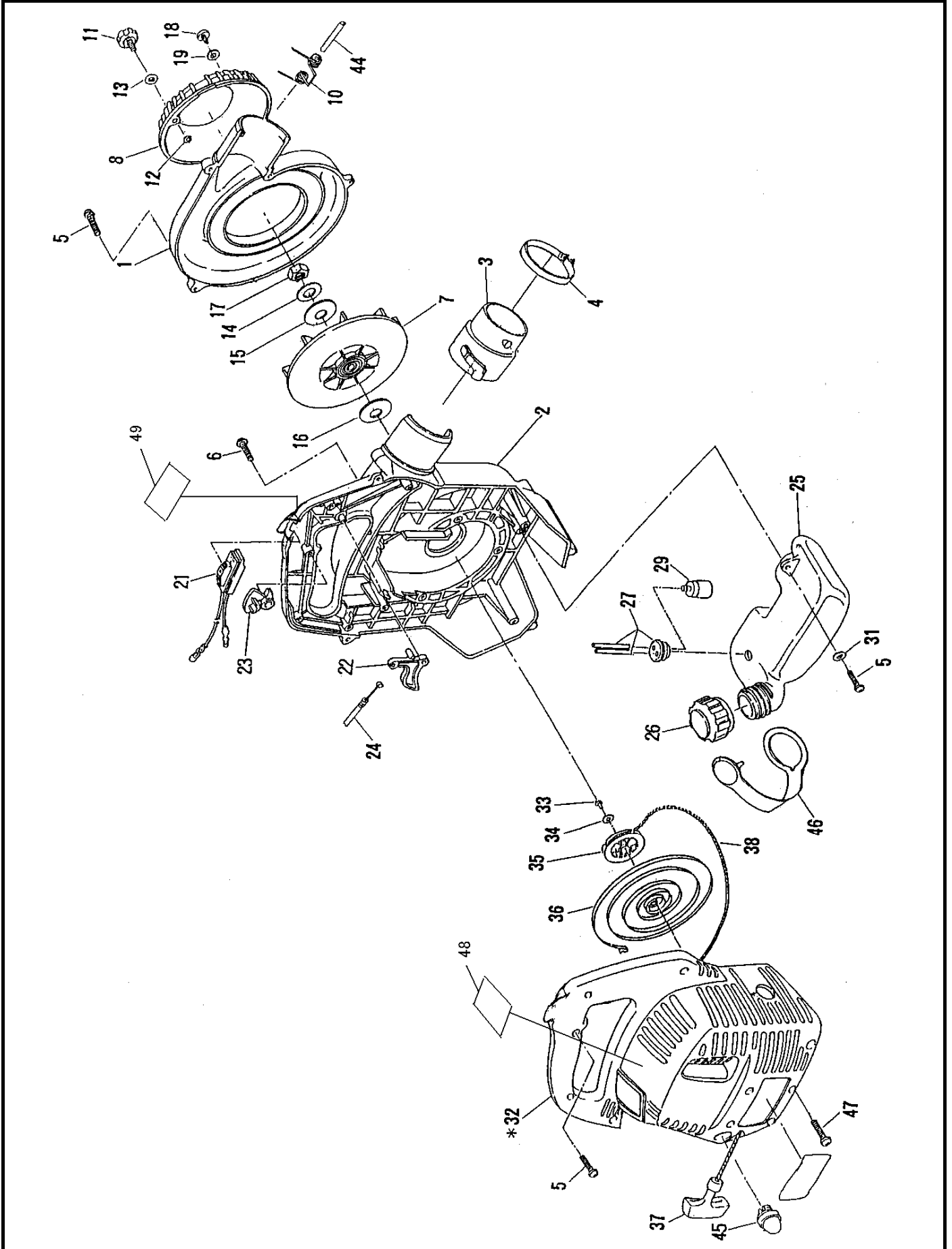
(CE SPEC.)

KEY NO.	PART NO.	Q'TY	DESCRIPTION	
		FL251 FL251V		
1	6601021000-1	1	Case (1) volute compl.	
2	6601019001	1	Case (2) volute compl.	
3	6609511300	1	Pipe extension	
4	6609508500	1	Clamp hose	
5	6601501300	13	Screw tapping (M5x20)	
6	0043605350	3	Screw assy (M5x35 W SW)	
7	6601503300	1	Impeller	
8	6601502701	1	Protector	
10	6601503001	1	Spring	
11	6601503201	1	Screw	
12	6601503400	1	Snapping outer	
13	6601503500	1	Washer	
14	0200089850	1	Washer (M8)	
15	0031208000	1	Washer (M8)	
16	6601503600	1	Washer	
17	0021708000	1	Nut (M8x6)	
18	6601500500	1	Tapping screw (M5x14)	
19	0031205000	1	Washer (M5)	
20	6609508600	1	Lavel caution	
21	6605010002	1	Switch compl.	
22	6605502001	1	Lever throttle	
23	6605502101	1	Stopper lever	
24	0630049930	1	Control cable	
25	6603500101	1	Tank fuel	
26	5256059000	1	Cap fuel tank	
27	6603001000	1	Tube	
29	5236503900	1	Filter	
31	0031105000	2	Washer (M5)	
*32	6608004001	1	Cover engine compl. (incl.33to38)	
33	6608001010	1	Tapping screw	
34	6608001020	1	Washer	
35	6608001030	1	Reel	
36	6608001040	1	Spiral spring	
37	6608001050	1	Starter knob	
38	6608001060	1	Starter rope	
44	6601503100	1	Shaft	
45	5236504300	1	Pump	
46	6255021002	1	Strap unit	
47	0140059450	4	Screw (M5x18 W SW)	

FL251 PARTS LIST

MACHINE BODY

(U.S. SPEC.)



FL251 PARTS LIST

MACHINE BODY

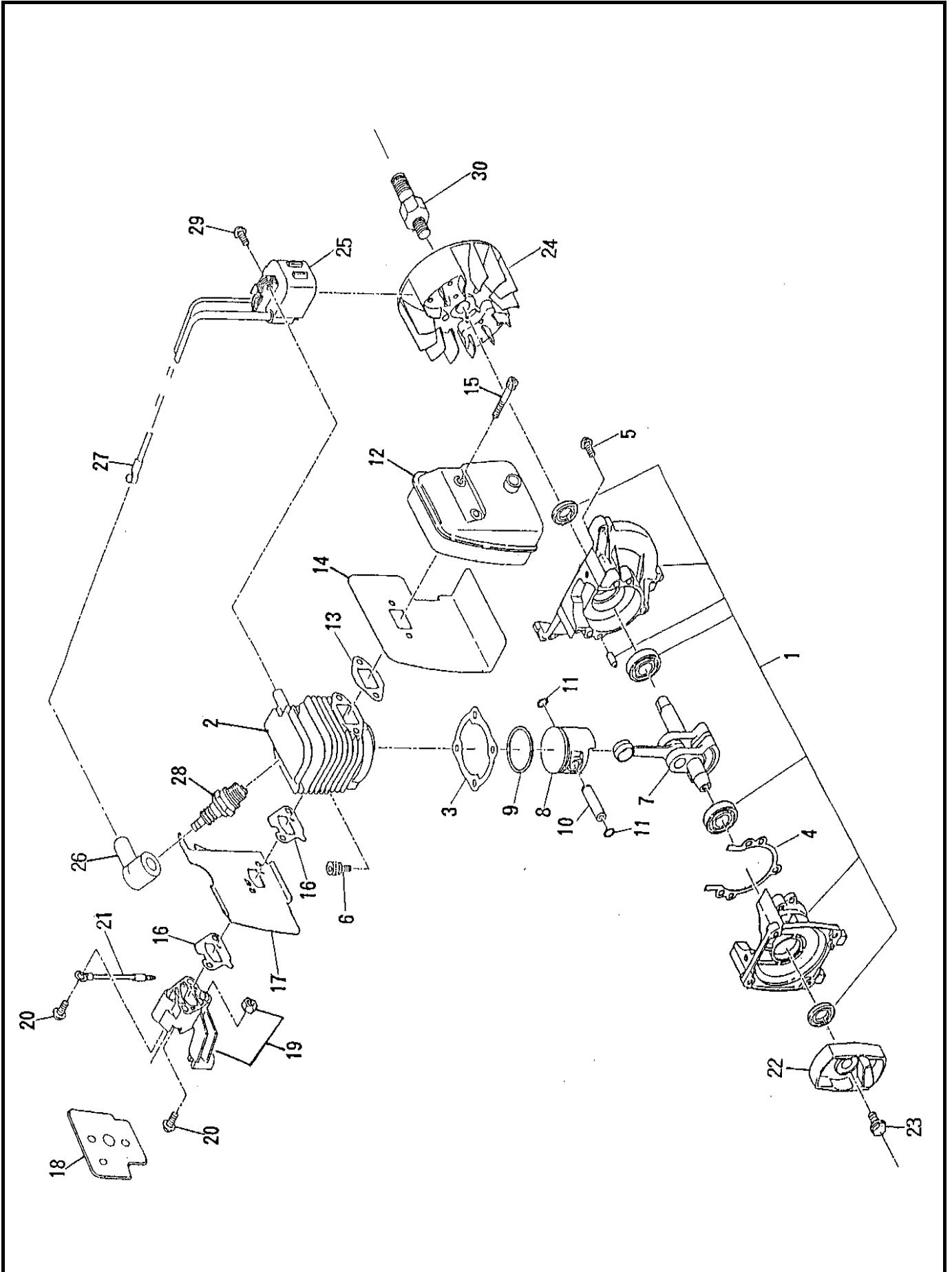
(U.S. SPEC.)

KEY NO.	PART NO.	Q'TY	DESCRIPTION	
		FL251		
1	6601021000-1	1	Case (1) volute compl.	
2	6601019001	1	Case (2) volute compl.	
3	6609511300	1	Pipe extension	
4	6609508500	1	Clamp hose	
5	6601501300	13	Screw tapping (M5x20)	
6	0043605350	3	Screw assy (M5x35 W SW)	
7	6601503300	1	Impeller	
8	6601502701	1	Protector	
10	6601503001	1	Spring	
11	6601503201	1	Screw	
12	6601503400	1	Snapping outer	
13	6601503500	1	Washer	
14	0200089850	1	Washer (M8)	
15	0031208000	1	Washer (M8)	
16	6601503600	1	Washer	
17	0021708000	1	Nut (M8x6)	
18	6601500500	1	Tapping screw (M5x14)	
19	0031205000	1	Washer (M5)	
21	6605010002	1	Switch compl.	
22	6605502001	1	Lever throttle	
23	6605502101	1	Stopper lever	
24	0630049930	1	Control cable	
25	6603500101	1	Tank fuel	
26	5256059000	1	Cap fuel tank	
27	6603001000	1	Tube	
29	5236503900	1	Filter	
31	0031105000	2	Washer (M5)	
*32	6608004001	1	Cover engine compl. (incl.33to38)	
33	6608001010	1	Tapping screw	
34	6608001020	1	Washer	
35	6608001030	1	Reel	
36	6608001040	1	Spiral spring	
37	6608001050	1	Starter knob	
38	6608001060	1	Starter rope	
44	6601503100	1	Shaft	
45	5236504300	1	Pump	
46	6255021002	1	Strap unit	
47	0140059450	4	Screw (M5x18 W SW)	
48	5259501400	1	Label engine	
49	6609507900	1	Label sound level	

FL251 FL251V PARTS LIST

ENGINE BODY

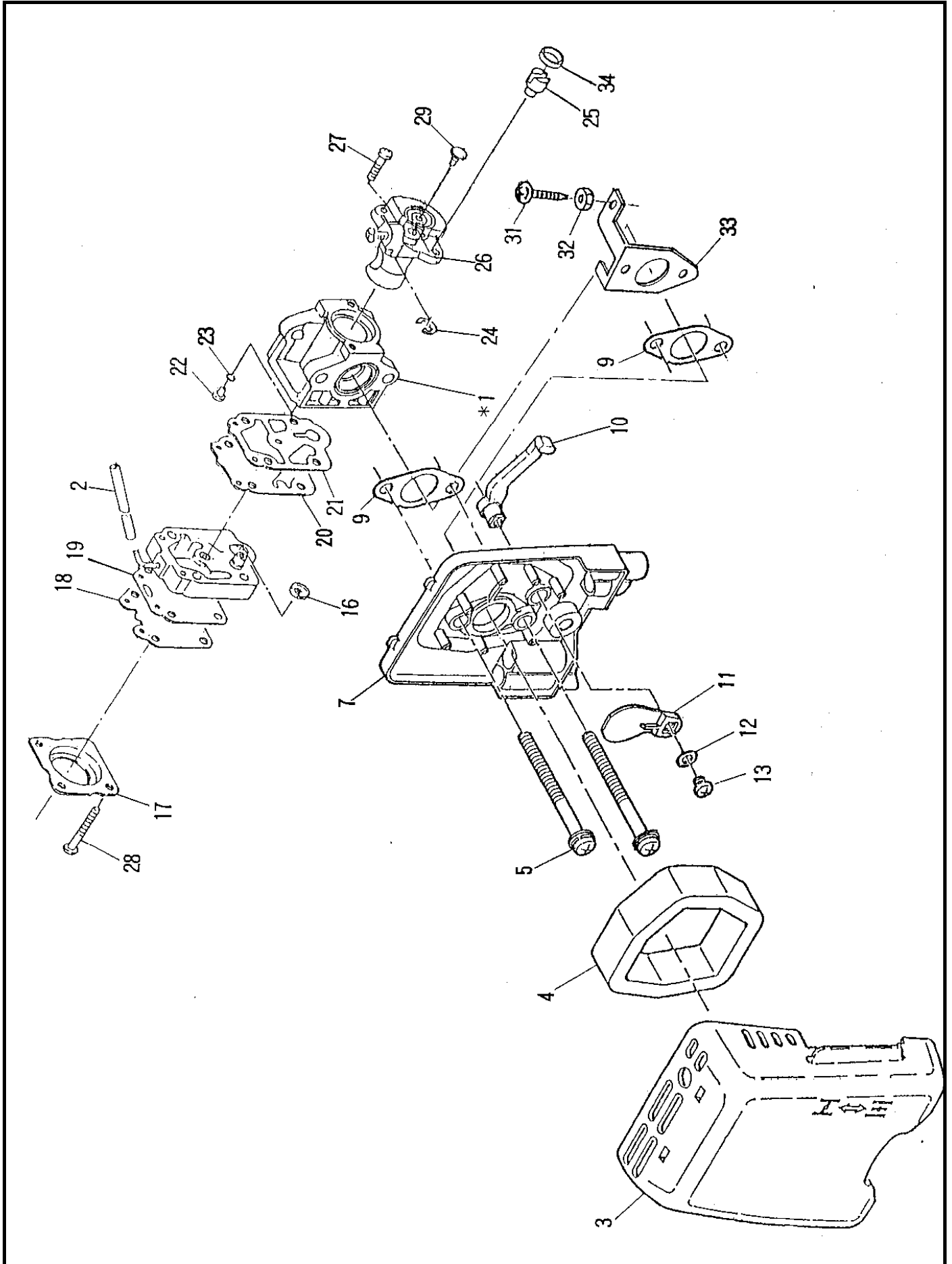
(CE, U.S. SPEC.)



FL251 FL251V PARTS LIST

CARBURETOR & AIR CLEANER

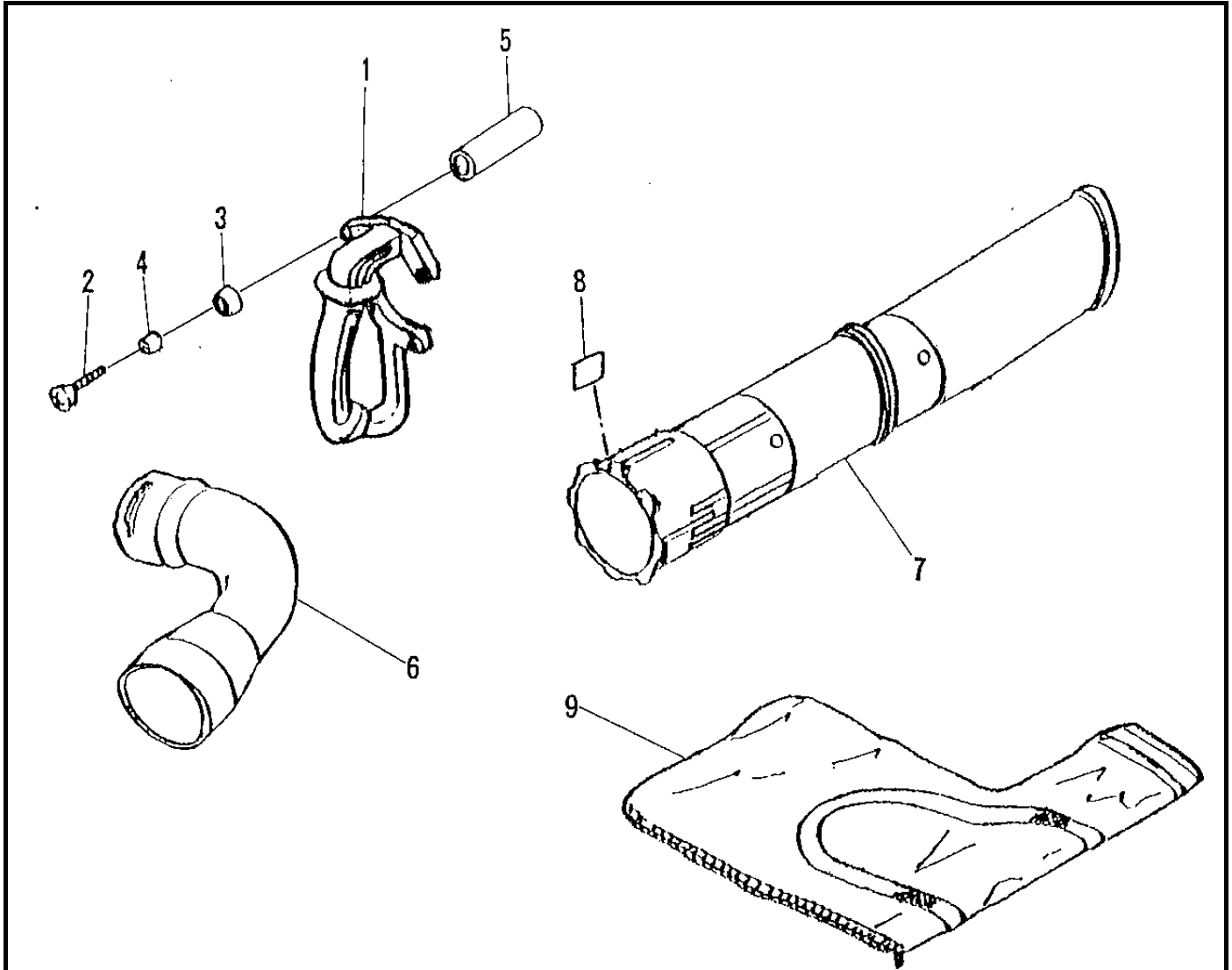
(CE, U.S. SPEC.)



FL251V PARTS LIST

STANDARD ACCESSORY

(CE SPEC.)



KEY NO.	PART NO.	Q'TY	DESCRIPTION
1	6609008000	1	Grip compl.
2	0140059460	4	Screw assy (M5x60 W SW)
3	5317500300	4	Protector
4	0230059990	4	Spacer
5	6115503800	4	Spacer
6	6609502800	1	Elbow
7	6609045000	1	Pipe vacuum compl.
8	6609504800	1	Label mark
9	6609006001	1	Dust bag

